

MSHCP Amendment: Recreation Focus Group Development Areas and the Reserve System

Kimberley Goodwin
February 13, 2025



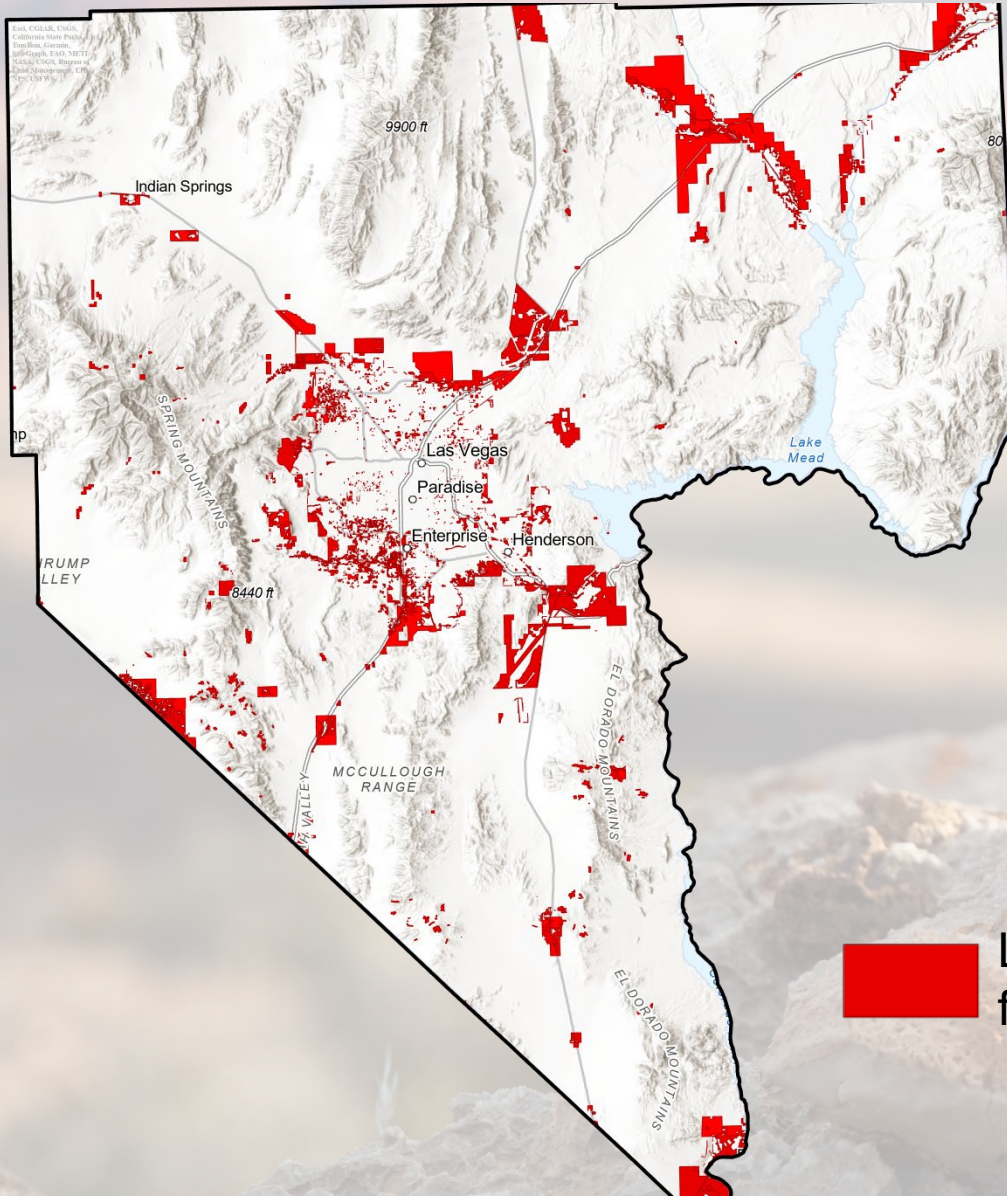
MOJAVEMAX.COM



desert conservation
PROGRAM



Land Available for Development



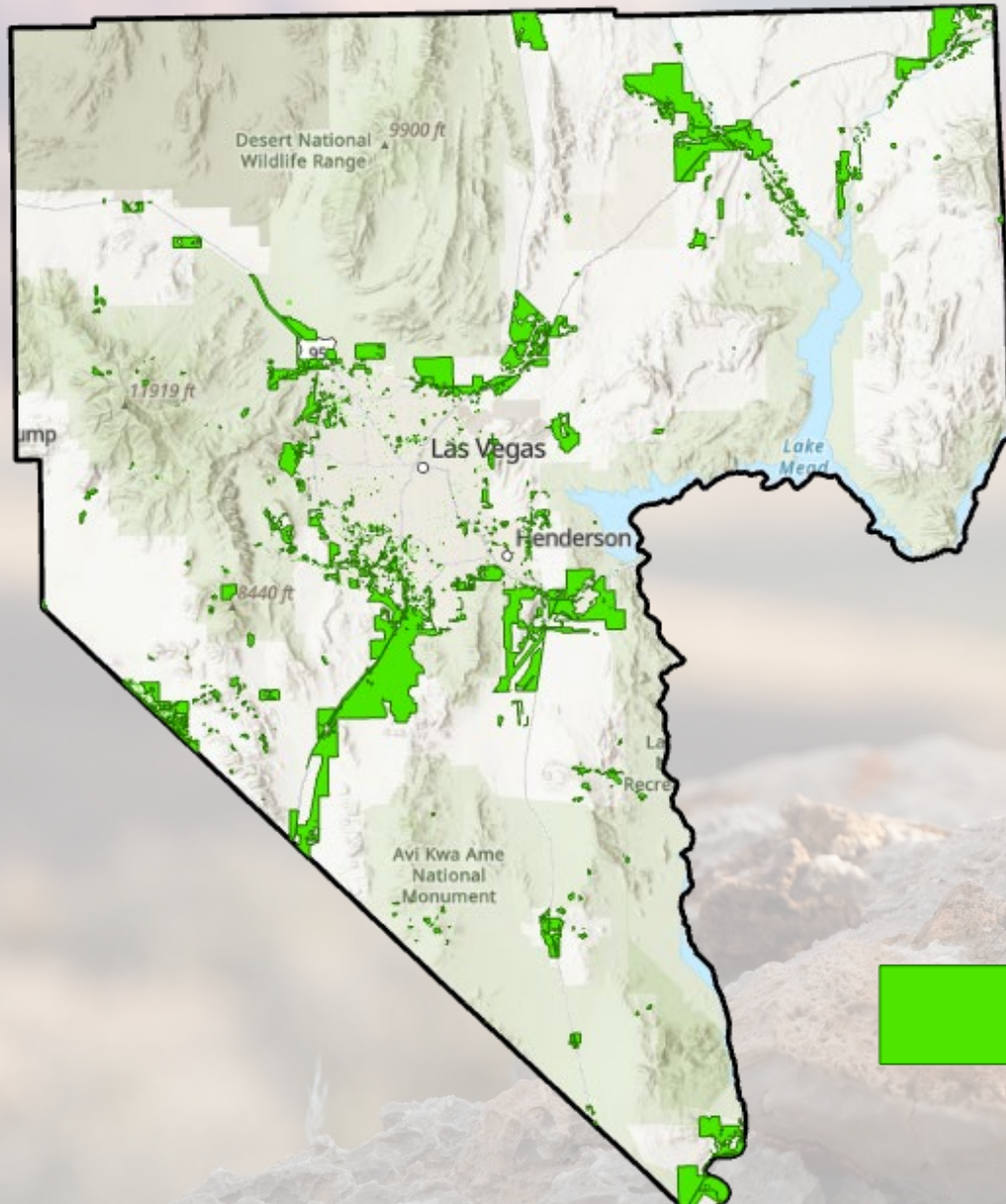
Current Lands Potentially Available for Development:
237,000 acres

Consists of:

- Undeveloped private property
- Undeveloped BLM land within existing disposal boundaries

Land Potentially Available for Development


Potential Development Areas



MSHCP Amendment Impact Area:
274,523 acres

Consists of:

- Undeveloped private property
- Undeveloped BLM land within modified disposal boundaries
- Southern Nevada Supplemental Airport surrounding lands

 MSHCP Amendment
Impact Area

UNAVOIDABLE TAKE

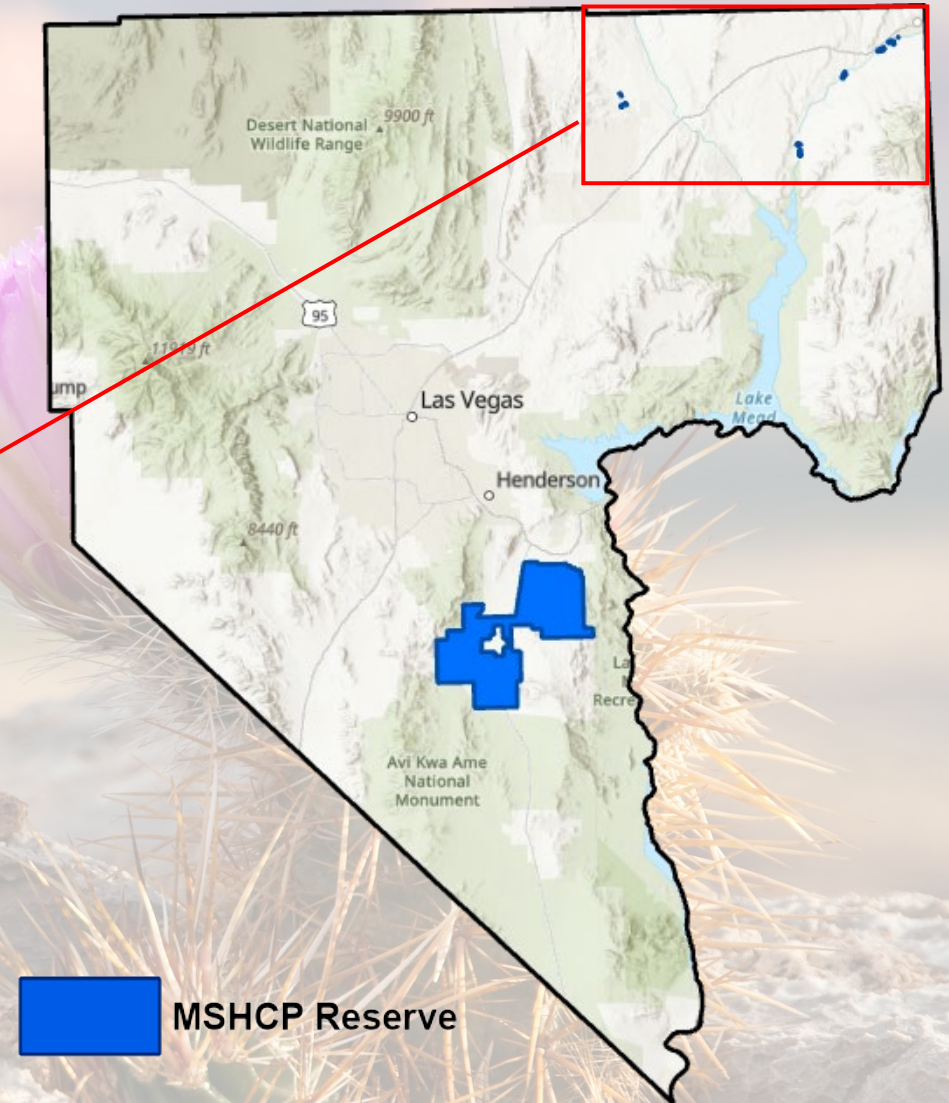


Measures to Mitigate Unavoidable Take

- Must be based on biological needs of Covered Species
- Designed to offset impacts of take resulting from Covered Activities
- Examples of HCP mitigation measures:
 - Restoration of degraded habitats
 - Land preservation (purchase, conservation easements)
 - Habitat enhancement (increase specific function of habitat)
 - Creation of new habitat or new populations
 - Threat reduction (non-native species management, fire management)
 - Translocation of impacted individuals
 - Repatriation of species to formerly occupied habitat

RESERVE SYSTEM

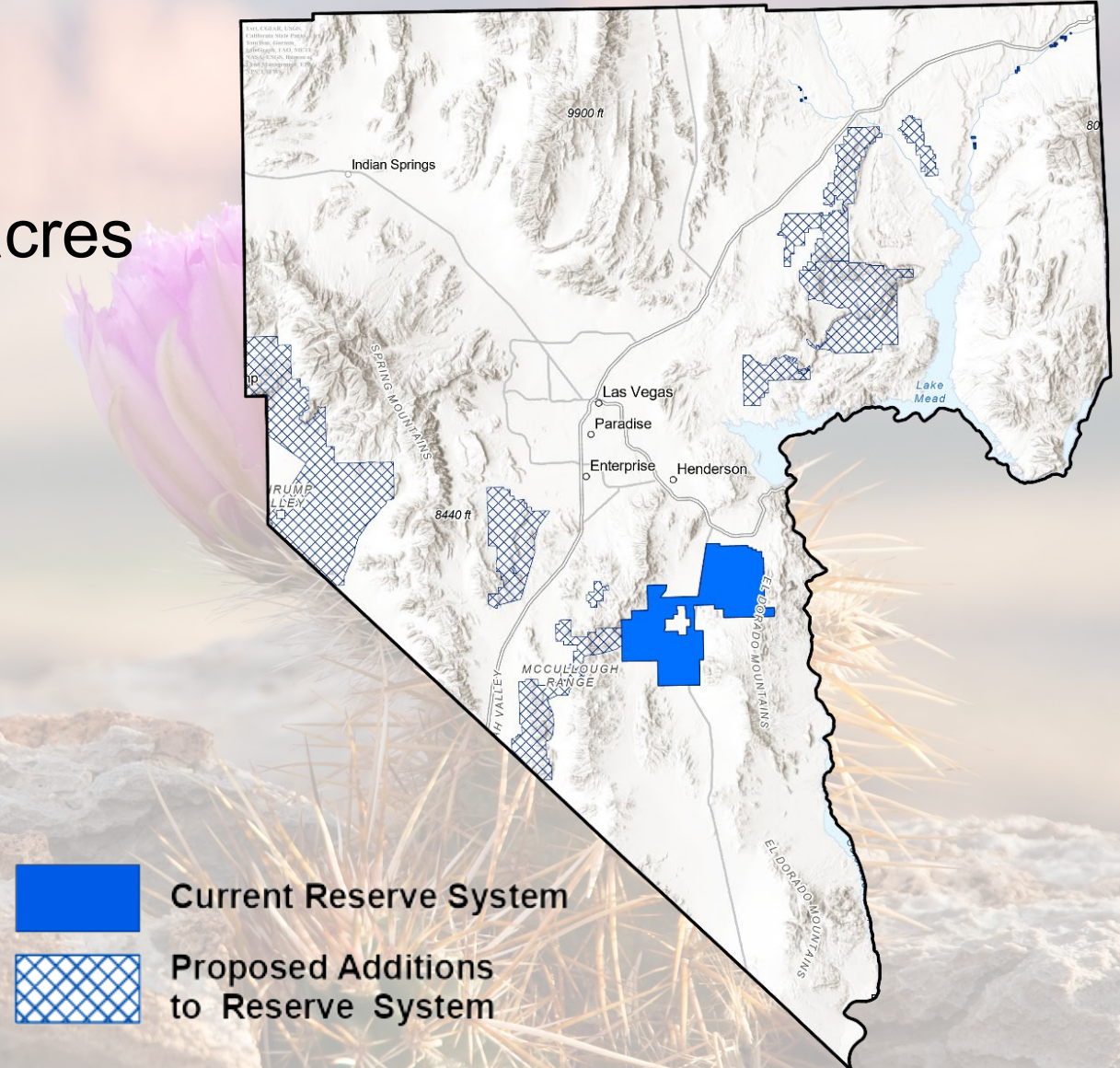
Current properties = 88,049 acres



PROPOSED RESERVE SYSTEM



Proposed Additions = 358,964 acres

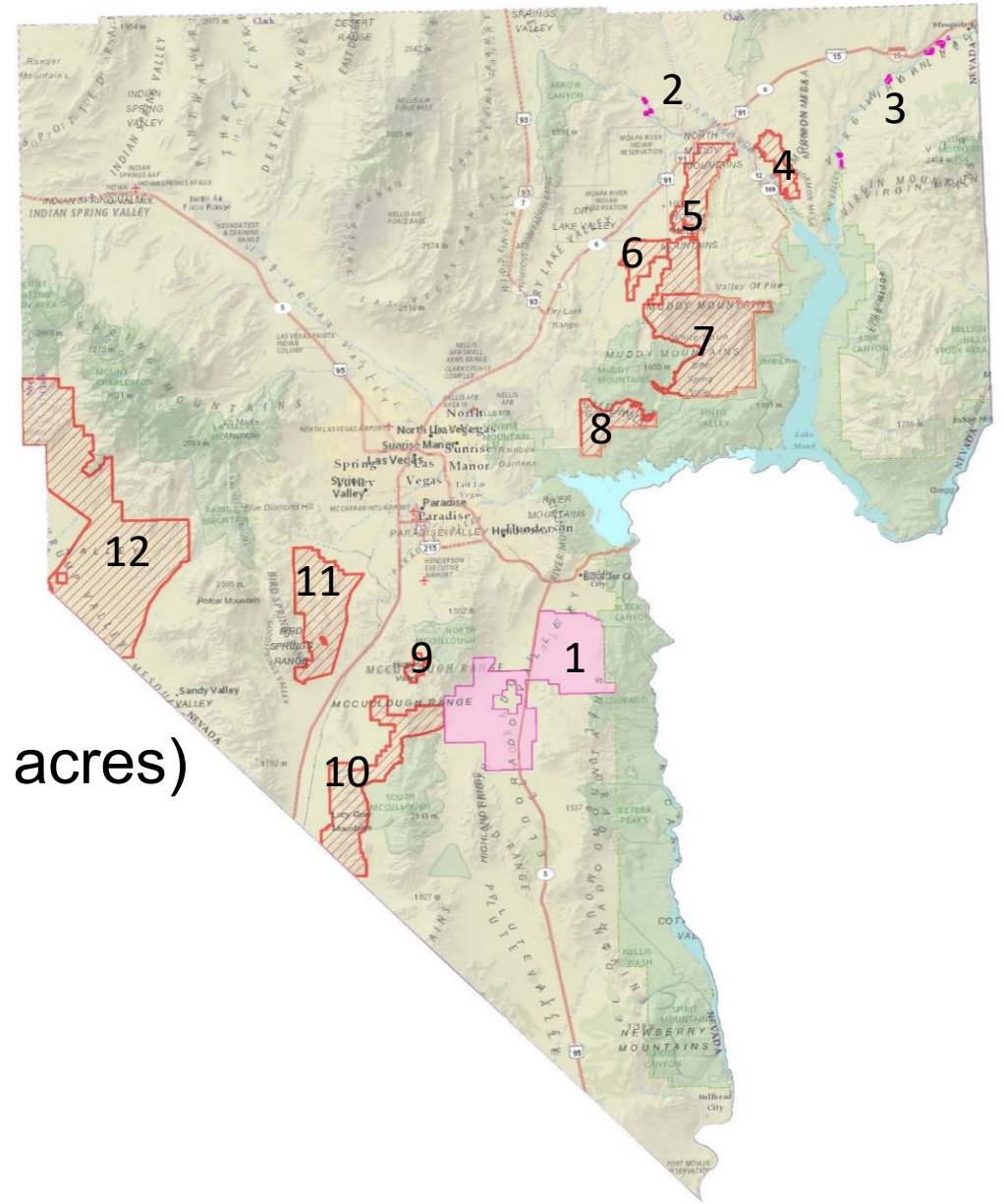


PROPOSED RESERVE SYSTEM



1. BCCE (87,628 acres)
2. Muddy River Reserve Unit (116 acres)
3. Virgin River Reserve Unit (665 acres)
4. Mesa Milkvetch (8,417 acres)
5. Muddy Mountains (33,430 acres)
6. California Wash (10,120)
7. Bitter Springs (61,813 acres)
8. Gale Hills (16,355 acres)
9. Jean Lake (2,645 acres)
10. Desert Tortoise Protective Corridor (45,881 acres)
11. Bird Springs Valley (39,327 acres)
12. Stump Springs (140,976 acres)

Total Reserve System = 447,013 acres



RESERVE SYSTEM ESTABLISHMENT



Broad management direction is described in proposed federal legislation

Alternative: negotiate with BLM to incorporate management direction within the state-wide RMP

- SMAs shall be managed in a manner that conserves, protects, and enhances the purposes for which the SMA is established, and to ensure protection of species covered by the MSHCP.
- Uses:
 - Use of motorized vehicles is only permitted on designated routes
 - No new permanent or temporary roads may be constructed
- Withdrawal:
 - All forms of entry, appropriation, and disposal under public lands laws
 - Location, entry, and patent under mining laws
 - Operation of mineral leasing, mineral materials, and geothermal leasing laws

RESERVE SYSTEM MANAGEMENT

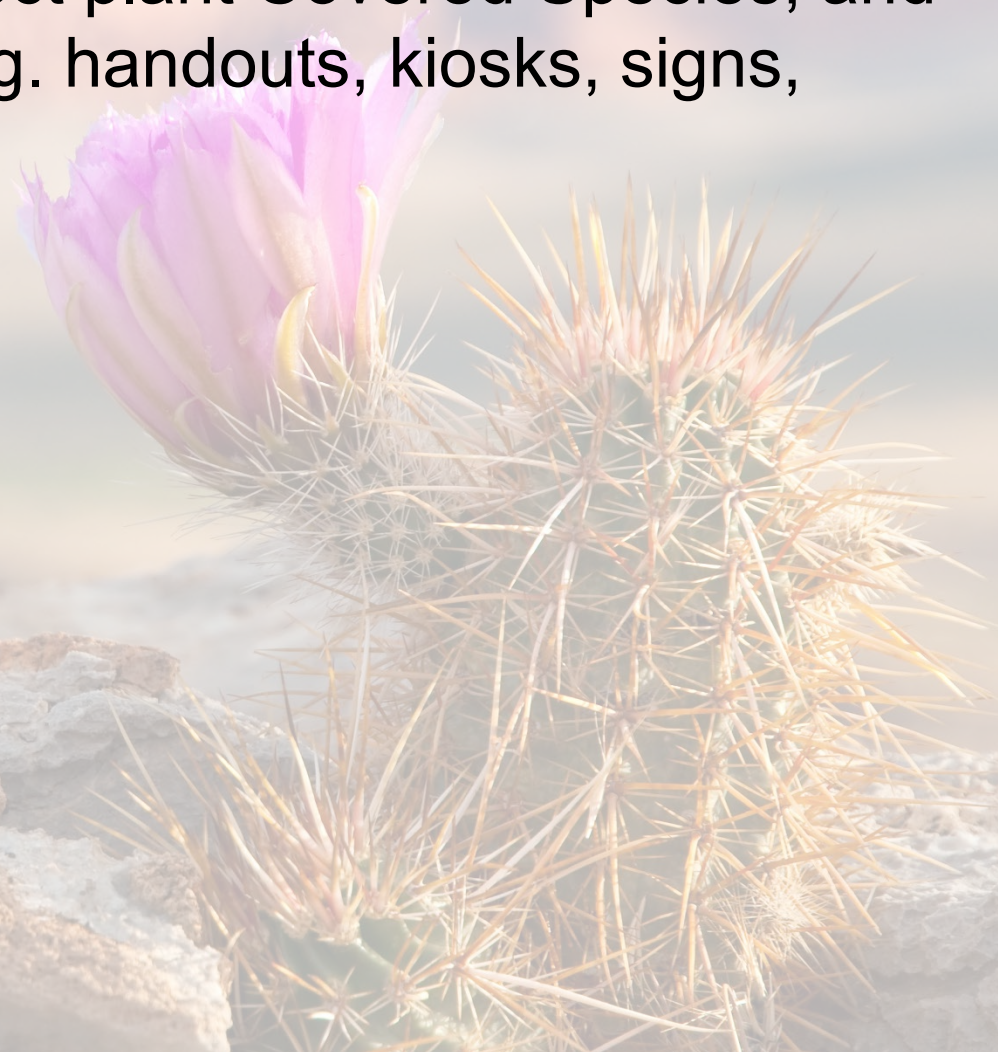


- Fencing highways, freeways, and primary county roads;
- Removing, restoring, or rehabilitating closed roads;
- Cleaning illegal dump sites;
- Removing or controlling invasive or exotic plant infestations;
- Improving habitat connectivity by increasing the size of existing culverts, increasing the number of culverts, or constructing alternative means of crossings;
- Additional law enforcement patrols;
- Restoration of habitat and corridors;
- Creating artificial nests or burrow sites;
- Developing water resources for wildlife;

RESERVE SYSTEM MANAGEMENT



- Fencing designated areas to protect plant Covered Species; and
- Increasing education outreach (e.g. handouts, kiosks, signs, community events).
- Weed Management Plan
- Fire Management Plan



RESERVE SYSTEM ESTABLISHMENT



Programmatic Cooperative Agreement between County and BLM with FWS oversight:

- Describe specific management and funding responsibilities within the SMAs
- Ensures durability of mitigation actions carried out on cooperatively managed lands

Multiple NEPA Analysis Required to Initiate and Implement the Plan:

- MSHCP EIS
- Resource Management Plan Update
- Cooperative Agreements and Management Plans for 9 Special Management Areas
- Travel and Transportation Planning for 9 Special Management Areas